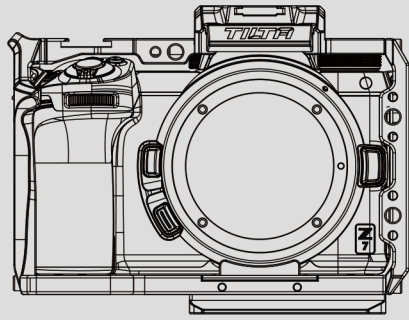


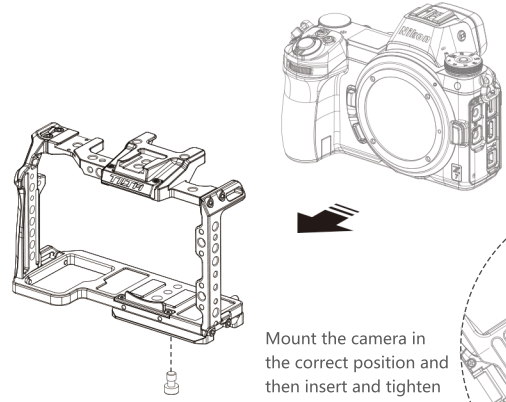
NIKON — Z6/Z7 —



CAGE HANDLES SUPPORT SYSTEM ACCESSORIES

1

Install the Z6/Z7 camera into the cage

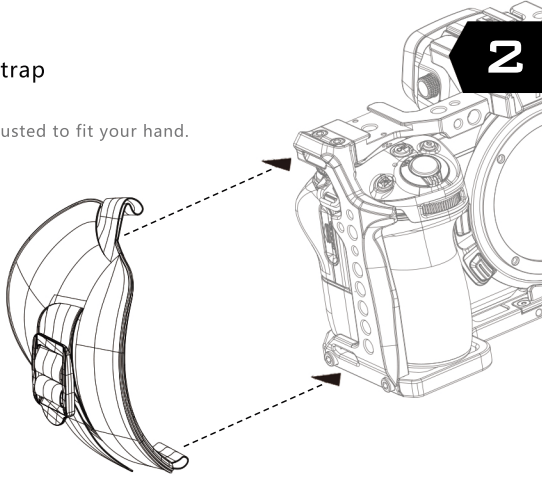


Mount the camera in the correct position and then insert and tighten the mounting screw

Universal hand strap

(Included)

Hand strap can be adjusted to fit your hand.

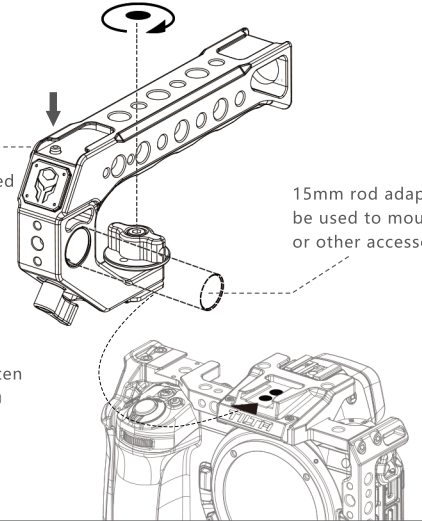


3

A limit stop is located on the cold shoe mount in the front of the top handle

Slide the top handle into the cold shoe mount and then fasten the knob (Optional)

15mm rod adapter can be used to mount EVFs or other accessories



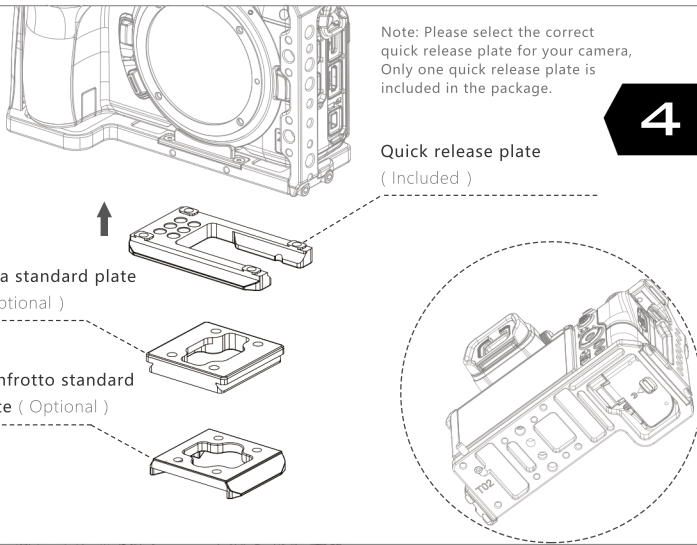
4

Note: Please select the correct quick release plate for your camera. Only one quick release plate is included in the package.

Quick release plate
(Included)

Arca standard plate
(Optional)

Manfrotto standard plate (Optional)



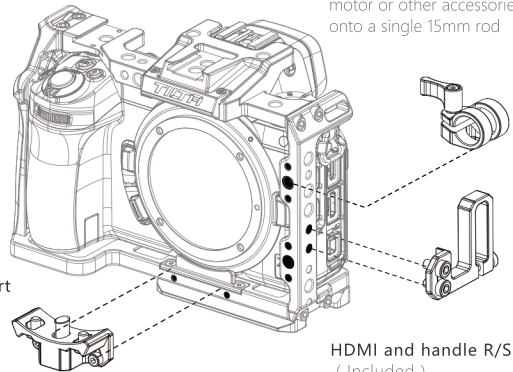
5

Lens support
(Optional)

Rod adapter (Included)

Allows you to mount a Nucleus Nano motor or other accessories that mount onto a single 15mm rod

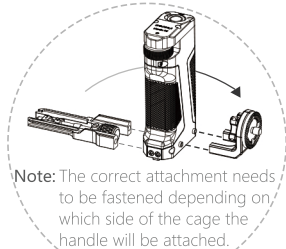
HDMI and handle R/S cable mount
(Included)



7

Side handle
(Optional)

1/4"-20 to ARRI rosette attachment
The function is shown below



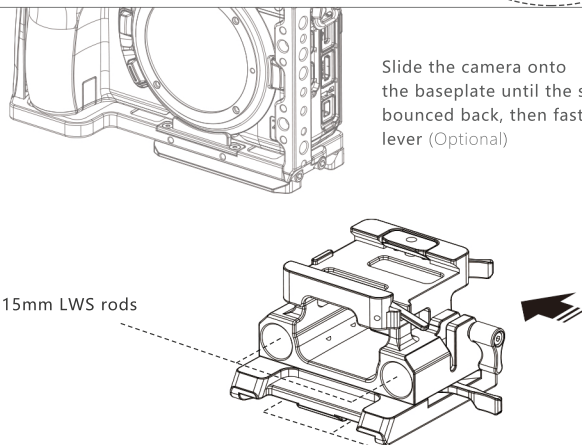
Note: The correct attachment needs to be fastened depending on which side of the cage the handle will be attached.

6

Slide the camera onto the baseplate until the stopper is bounced back, then fasten the lever (Optional)

For 15mm LWS rods

Tilta standard dovetail spacing



1/4"-20 to ARRI rosette attachment
(Optional)

This Universal converter is compatible with handles that have ARRI rosettes. This allows the handles to be mounted on the left or right side of the cage.

