



TILTA ECOSYSTEM FOR DJI RONIN

ACHIEVE CINEMATIC MOVEMENTS
DJI RONIN ECOSYSTEM

TILTA is a registered trademark owned by Tilta Technology Co., Ltd.

Address: Tilta Inc. 1901 W Magnolia Blvd, Burbank, CA 91506 UNITED STATES

Tel: +1 (818) 561-4991

All copyrights belong to Tilta Technology Co. Ltd.

Written permission is needed for any reproductions.

Tilta has the right to adjust product specifications without notice.

All measurements are for reference only. Please see the actual products for more details.



www.tilta.com

ABOUT US

TILTA Technology was established in 2010, dedicated to providing high-quality photography and film equipment.

From DSLR cages to professional camera accessories, we continuously refine and develop our products, gradually evolving from a manufacturer to a comprehensive solutions provider. We have achieved outstanding results in wireless lens control, camera cages, gimbal support systems, shock-absorbing car mounts, and other fields.

After setting up our own factory in 2011, we made unremitting efforts to break into the Hollywood market with our electronic control solutions, which reached new heights in 2016. In the same year, we also established our North American branch, In April 2017, we opened our showroom in Los Angeles.

As an associate member of the American Society of Cinematographers, our collaboration with many professional cinematographers enables us to continually improve our products based on their experience and suggestions, inspiring users' imagination and providing unlimited creativity and possibilities.

The Tilta Float system has the same flexibility and mobility as expensive traditional Steadicam systems, which previously only appeared on high-budget set.

The revolutionary release of the Hydra Arm Mini provides every creator with a consumer-grade car mount shooting solution that is easy to use.

In the future, TILTA will continue to provide industry-leading products and services, creating more value for the film industry and exploring the future of the global film industry with millions of creators.





// CATALOG

HANDHELD

RING GRIP	01
DUAL HANDLE POWER SUPPLY BRACKET	03
DUAL HANDLE BRACKET	04
LIGHTWEIGHT DUAL HANDLE GIMBAL SUPPORT SYSTEM	06

REAR OPERATING CONTROL HANDLE

LIGHTWEIGHT REAR OPERATING CONTROL HANDLE FOR DJI RONIN	07
---	----

ADVANCED REAR OPERATING CONTROL HANDLE FOR DJI RONIN	07
--	----

REAR OPERATING HANDLE FOR DJI RONIN	07
-------------------------------------	----

FLOAT

TILTA FLOAT HANDHELD GIMBAL SUPPORT SYSTEM	09
--	----

MANFROTTO QUICK RELEASE PLATE ADAPTER FOR TILTA FLOAT STABILIZING ARM	11
---	----

ECOSYSTEM FOR DJI

VIDEO TRANSMISSION SYSTEM	13
ACION CAMERAS	17
GIMBAL SERIES	20

ADVANCED RING GRIP FOR DJI RONIN

Versatile carbon fiber ring grip. Gain efficient control of the gimbal, camera, and wireless focus motor.



Experience PRO Level Control.

New wireless control for RS3 Pro ring grip



TGA-PRG

BASIC RING GRIP PLUS
FOR DJI RONIN



TGA-PRG2

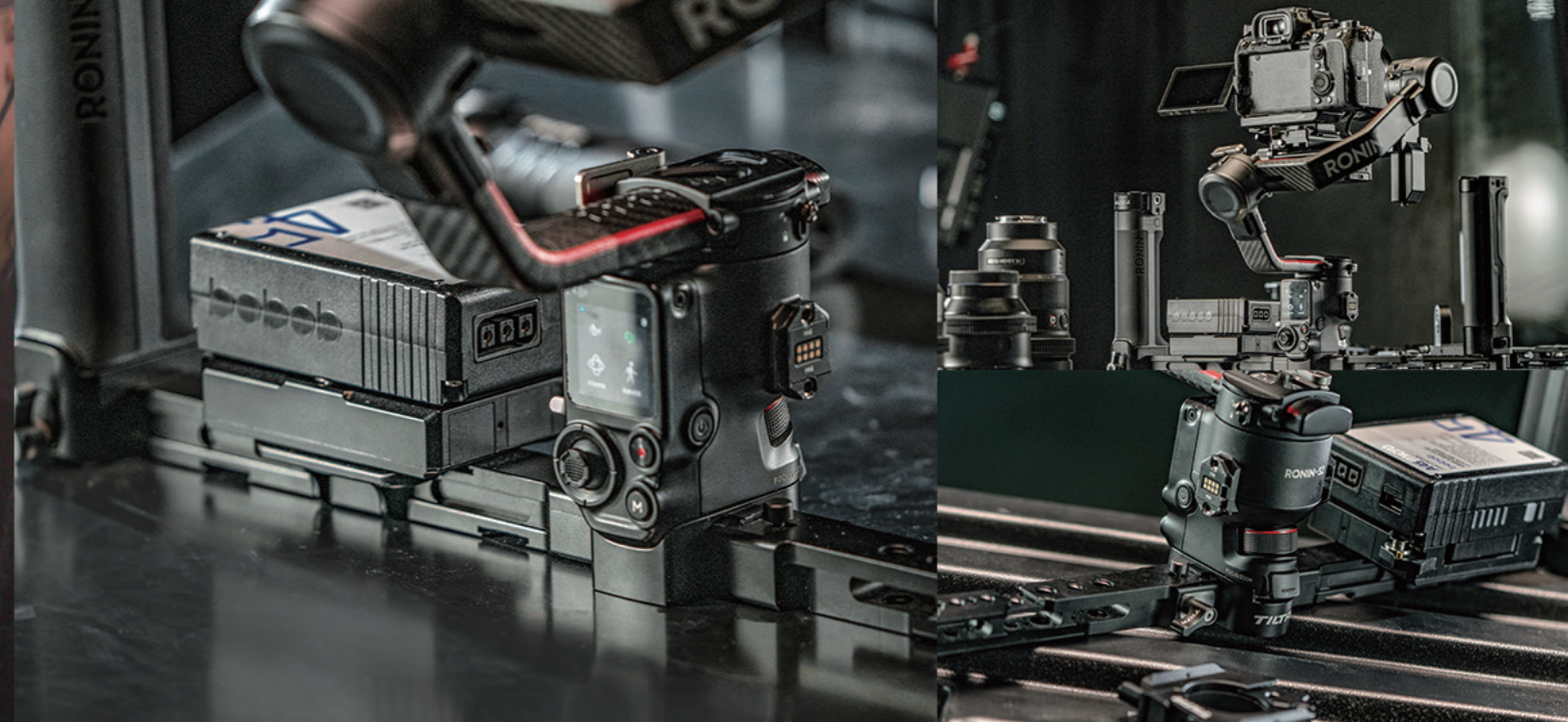
BASIC RING GRIP PLUS
FOR DJI RONIN CONTROL KIT



Custom design for DJI Ronin

The dual-handed operation reduces pressure on the operator.

DUAL HANDLE POWER SUPPLY BRACKET FOR DJI RONIN



DUAL HANDLE POWER SUPPLY BRACKET

The original RS2 gimbal battery grip can be installed and used as one of the handles. Both remote control handle and non-control handle are available.

DUAL HANDLE BRACKET FOR DJI RONIN



190G

Rugged and lightweight aluminum material for secure support.



NEW ANGLES EXPAND YOUR VISION

Flexible operating angles fulfill various shooting needs.



LIGHTWEIGHT DUAL HANDLE GIMBAL SUPPORT SYSTEM



DUAL HANDLE BRACKET FOR DJI RONIN

Multiple 1/4"-20 threads and cold shoe mounts for mounting a monitor bracket, phone holder, etc.



05



06

TILTA

PRO GEAR WITHIN REACH



LIGHTWEIGHT REAR OPERATING CONTROL HANDLE FOR DJI RONIN



ADVANCED REAR OPERATING CONTROL HANDLE FOR DJI RONIN



REAR OPERATING HANDLE FOR DJI RS2



Effective Protection
Protects contact pins.



FLEXIBLE ROTATION
Accommodates full range of motion.

EASILY ACHIEVE LOW ANGLE SHOTS.

FLOAT

HANDHELD GIMBAL SUPPORT SYSTEM



TILTA

09



Custom-made for stabilized camera movements.

TILTA FLOAT HANDHELD GIMBAL SUPPORT SYSTEM

Flexible and steady. ● Masterful movement.

PRODUCT NAME: Tilta Float Handheld Gimbal Support System
SKU: GSS-T01-V
CAPACITY: 10KG
DIMENSIONS: 835*345*210MM
NET WEIGHT: 7.5KG (GROSS WEIGHT 10KG)
COMPATIBILITY: DJI RS2/RS3 Pro/DJI Ronin-S
MATERIALS: Carbon Fiber+Aluminum+Silicone+Fabricsv



10

FLOAT

ADAPTER FOR FLOAT STABILIZING ARM



Quick Release Locking Toggle

Release to adjust the center of gravity. Lock to secure the quick release plate.

Ball Head Tie Down

Loosen the tie down to adjust the level of the ball head.



ECOSYSTEM FOR DJI TRANSMISSION

- Power Supply Module for DJI Transmitter
- Monitor Support Handles
- Battery Plate for DJI High-Bright Remote Monitor



POWER SUPPLY MODULE FOR DJI VIDEO TRANSMITTER

POWER SUPPLY MODULE FOR DJI VIDEO TRANSMITTER



Gold Mount to V-Mount

V-Mount to Gold Mount

Gold Mount to Gold Mount



HIGH COMPATIBILITY

Compatible with an array of professional cinema cameras.

BATTERY PLATE FOR DJI HIGH-BRIGHT REMOTE MONITOR



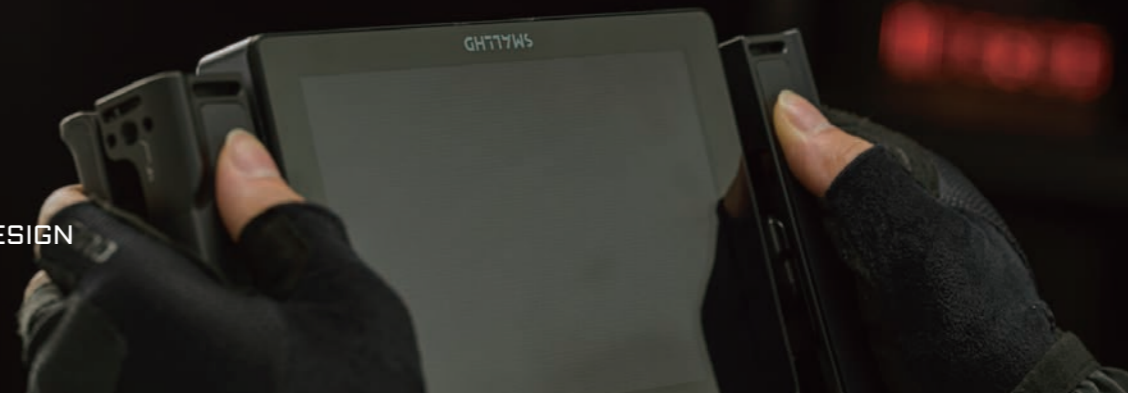
Battery Plate for DJI High-Bright Remote Monitor
V-MOUNT



Battery Plate for DJI High-Bright Remote Monitor
GOLD MOUNT

ERGONOMIC AND RUGGED DESIGN

Dual-sided anti-slip silicone cover.



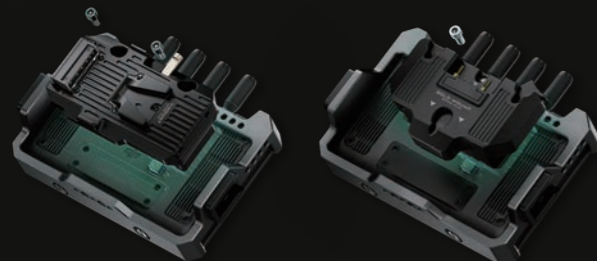
MONITOR SUPPORT HANDLES

Support your perfect vision.

90°



PROTECTION



Connect the monitor cage and the battery module with 1/4"-20 screws to protect the contact pins.



Horizontal Adjustment



The horizontal adjustment range is 32mm. Adjust the battery position according to the center of gravity.

COMPATIBLE WITH THE ORIGINAL MOUNTING OPTION.

Supports quick assembly.



ECOSYSTEM FOR ACTION CAMERAS



Ultimate Protection



Quick Assembly



Various Mounting Options



Adjustable Design



TILTA



QUICK ASSEMBLY

The quick locking design supports quick action.

Insta360 X3 | DJI Osmo Action 3 | GoPro HERO 11



ULTIMATE PROTECTION

The shock-absorbing pads and rugged camera cage provide ultimate protection for your camera.



MAGNETIC EXPANSION

The new magnetic 1/4"-20 mounting baseplate supports an easy transition between horizontal and vertical modes.



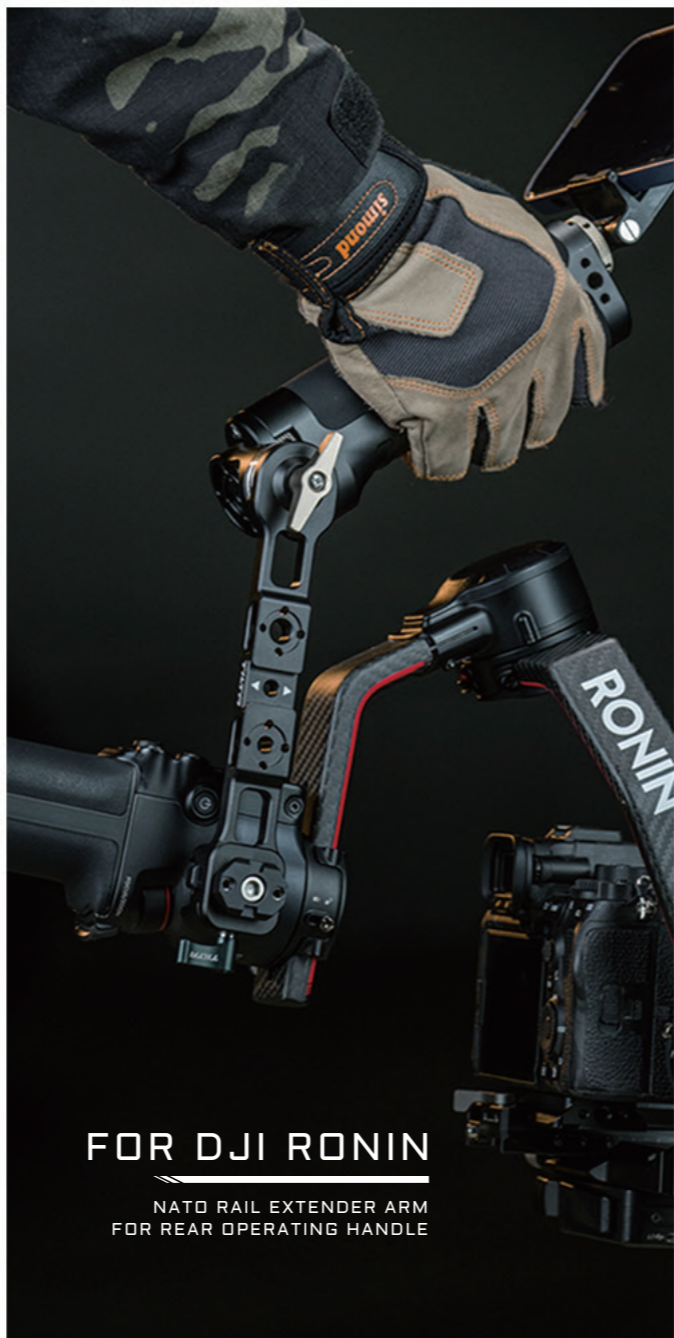
TILTA

FOR DJI RONIN

BATTERY PLATE TO POWER
PASS THROUGH PLATE KIT



PRO GEAR WITHIN REACH



FOR DJI RONIN

NATO RAIL EXTENDER ARM
FOR REAR OPERATING HANDLE

12V

POWER AND ABOVE

Provide power for advanced cinema
camera setup and RS2/RS3 PRO.



DUAL DIRECTION POWER
4 power supply ports



QUICK ASSEMBLY



OPTIMIZED OPERATING EXPERIENCE



REMOTE CONTROL KIT FOR DJI RONIN

Compatible with RS2/RS3 PRO



Manfrotto Quick Release
Extender Plate



REMOTE CONTROL RECEIVER
MODULE FOR RONIN.
Quick pairing. Remote control.



CONSTANT POWER
CONTINUOUS OPERATING
Supply Power via the 2-pin input(13-17V).



Top Camera Support
Bracket



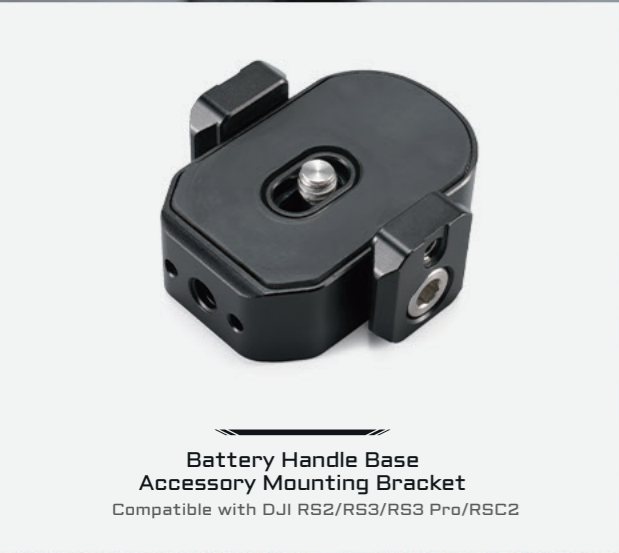
Side Arm
Counterweight Clamp



NATO Rail to Rosette Adapter
Compatible with DJI RS2/RS3/RS3 Pro/RSC2



Handheld Gimbal Tripod Clamp
Compatible with DJI RS2/RS3/RS3 Pro/RSC2



Battery Handle Base Accessory Mounting Bracket
Compatible with DJI RS2/RS3/RS3 Pro/RSC2



Side Mounted Cold Shoe Adapter
Compatible with DJI RS2/RS3/RS3 Pro/RSC2



Quick Release Baseplate Counterweight Adapter
Compatible with DJI RS2/RS3/RS3 Pro/RSC2

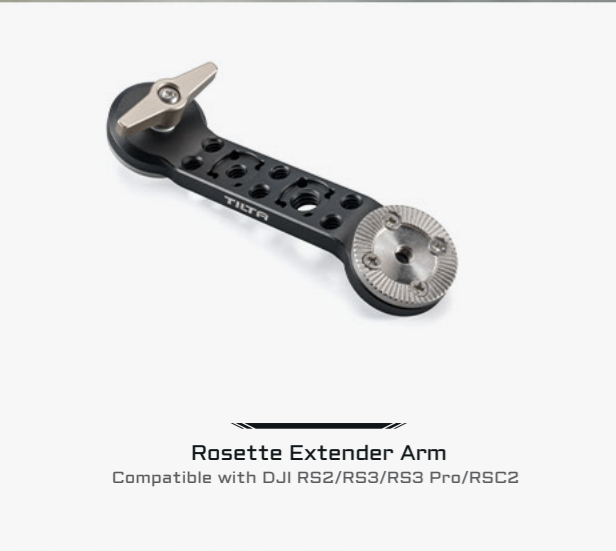


Extended Quick Release Baseplate
Compatible with DJI RS2/RS3/RS3 Pro/RSC2



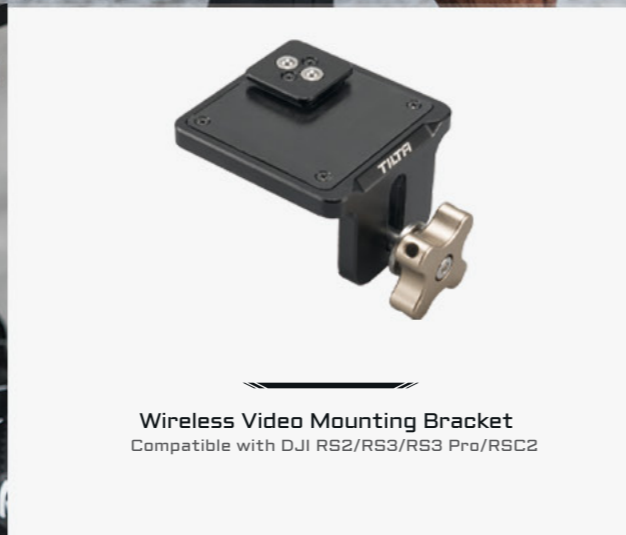
60g Counterweight
Compatible with DJI RS2/RS3/RS3 Pro/RSC2

Monitor Mounting Bracket
Compatible with DJI RS2/RS3/RS3 Pro/RSC2



Rosette Extender Arm
Compatible with DJI RS2/RS3/RS3 Pro/RSC2

Rear Operating Handle for DJI Ronin
Compatible with DJI RS2/RS3/RS3 Pro/RSC2



Wireless Video Mounting Bracket
Compatible with DJI RS2/RS3/RS3 Pro/RSC2

@TILTAUSA @TILTAGLOBAL @TILTA
 @TILTA_GLOBAL @TILTAMAX SALES@TILTA.COM

TILTA
PRO GEAR WITHIN REACH