



**TILTA** is a registered trademark owned by Tilta Technology Co., Ltd.

Address: Tilta Inc. 1901 W Magnolia Blvd, Burbank, CA 91506 United States

Toll Free: +1 (818) 561-4991

All copyrights belong to Tilta Technology Co. Ltd.

Written permission is needed for any reproductions.

Tilta has the right to adjust product specifications without notice.

All measurements are for reference only. Please see the actual products for more details.



[www.tilta.com](http://www.tilta.com)

**TILTA**

# MIRAGE

MOTORIZED VND MATTE BOX



# INTRODUCTION

TILTA Technology was established in 2010, dedicated to providing high-quality photography and film equipment.

From DSLR cages to professional camera accessories, we continuously refine and develop our products, gradually evolving from a manufacturer to a comprehensive solutions provider. We have achieved outstanding results in wireless lens control, camera cages, gimbal support systems, shock-absorbing car mounts, and other fields.

After setting up our own factory in 2011, we made unremitting efforts to break into the Hollywood market with our electronic control solutions, which reached new heights in 2016. In the same year, we also established our North American branch, In April 2017,we opened our showroom in Los Angeles.

As an associate member of the American Society of Cinematographers, our collaboration with many professional cinematographers enables us to continually improve our products based on their experience and suggestions, inspiring users' imagination and providing unlimited creativity and possibilities.

The Tilta Float system has the same flexibility and mobility as expensive traditional Steadicam systems, which previously only appeared on high-budget sets.

The revolutionary release of the Hydra Arm Mini provides every creator with a consumer-grade car mount shooting solution that is easy to use.

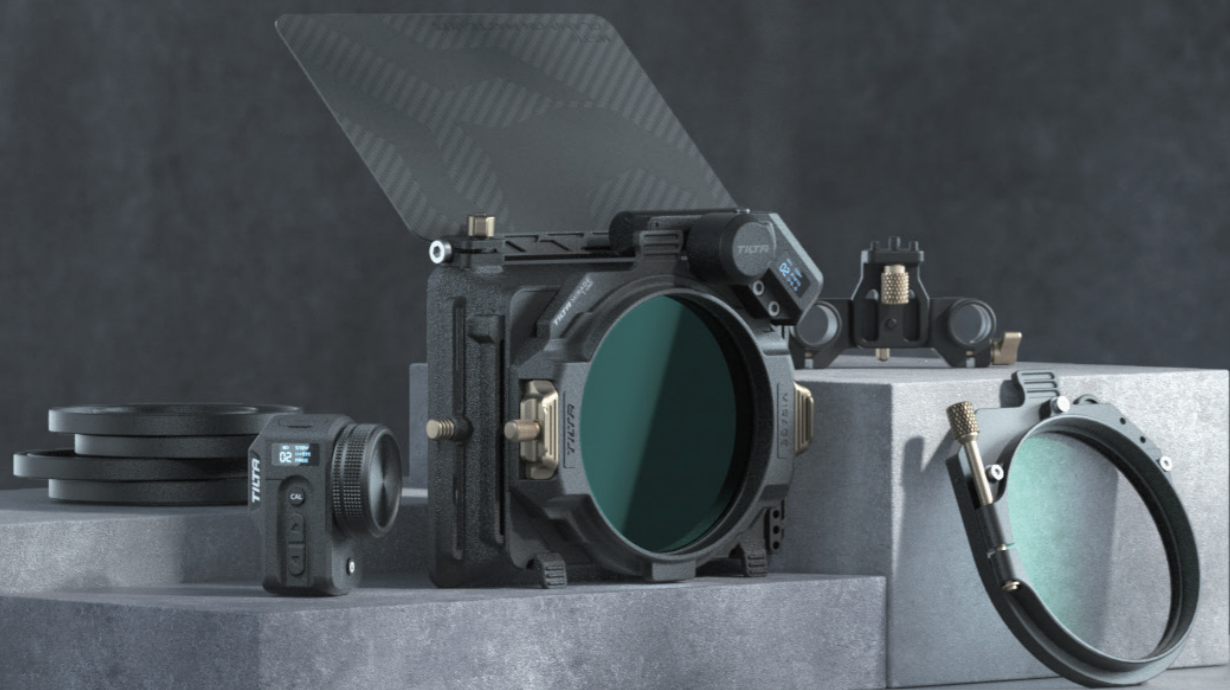
In the future, TILTA will continue to provide industry-leading products and services, creating more value for the film industry and exploring the future of the global film industrg with millions of creators.

# TILTA



DESIGNED FOR

THE NEXT GENERATION OF FILMMAKING



## CATALOGUE

---

01 NEW INSERT STYLE FILTER MOUNTING SYSTEM

05 MODULAR DESIGN

07 TILTA'S LATEST CREATIVE FILTERS ILLUSION FILTER SERIES

11 TILTA'S LATEST CREATIVE FILTERS FSND FILTER/UV FILTER SERIES

15 ULTIMATE WIRELESS EXPOSURE CONTROL

17 SHOOTING CONFIGURATION OPTIONS

21 ACCESSORY EXPANSION

25 SUPPORT ACCESSORIES FOR MIRAGE MATTE BOX

27 PRODUCT SPECIFICATIONS

# NEW INSERT STYLE FILTER MOUNTING SYSTEM

LIGHTWEIGHT AND LOWER COST



New Mirage matte box

179g

Traditional 4x5.65 filter

179g



## NEW INSERT SYTLE FILTER DESIGN

Light weight and more efficient than screw-in filters.  
More user-friendly for video production.



**95**<sup>MM</sup>  
STANDARD  
DIAMETER

Compatible with a wide range of classic cinema lenses.  
Supports step-down adapter rings for DSLR and mirrorless lenses.

LIGHTEST SETUP WEIGHS  
ONLY **130**<sup>G</sup>  
VND MODULE



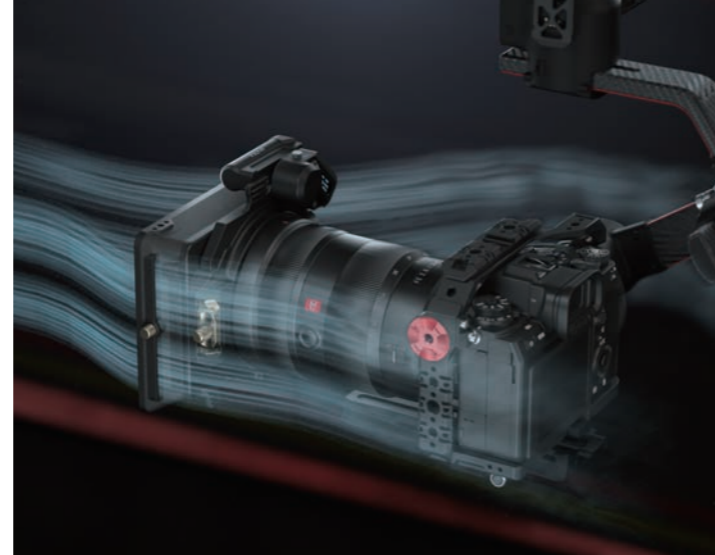
READY FOR FRONT MOUNTING  
**4\*5.65**  
FILTERS

4×5.65 stackable filter trays and holder are available for purchase, if multiple filters are needed.



## MODULAR DESIGN

**A** Removable modular design supports your creative needs.(Multiple newly patented designs.)



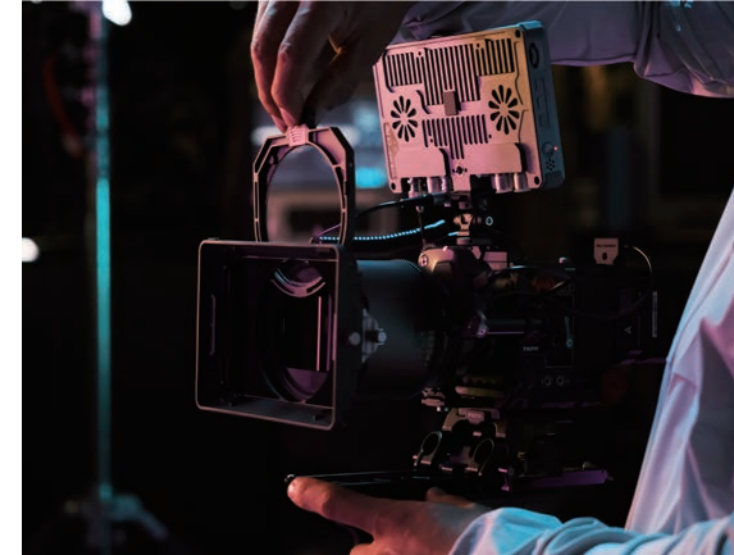
## AERODYNAMIC DESIGN

**B** The matte box body adopts an aerodynamic design with integrated vents that can reduce wind resistance and ensure stability when shooting subjects at high speeds.



## GOLDEN RATIO DESIGN

**C** Minimalist design supports even the most compact-sized cameras and lenses. Prevents vignetting when using lenses tighter than 14mm.

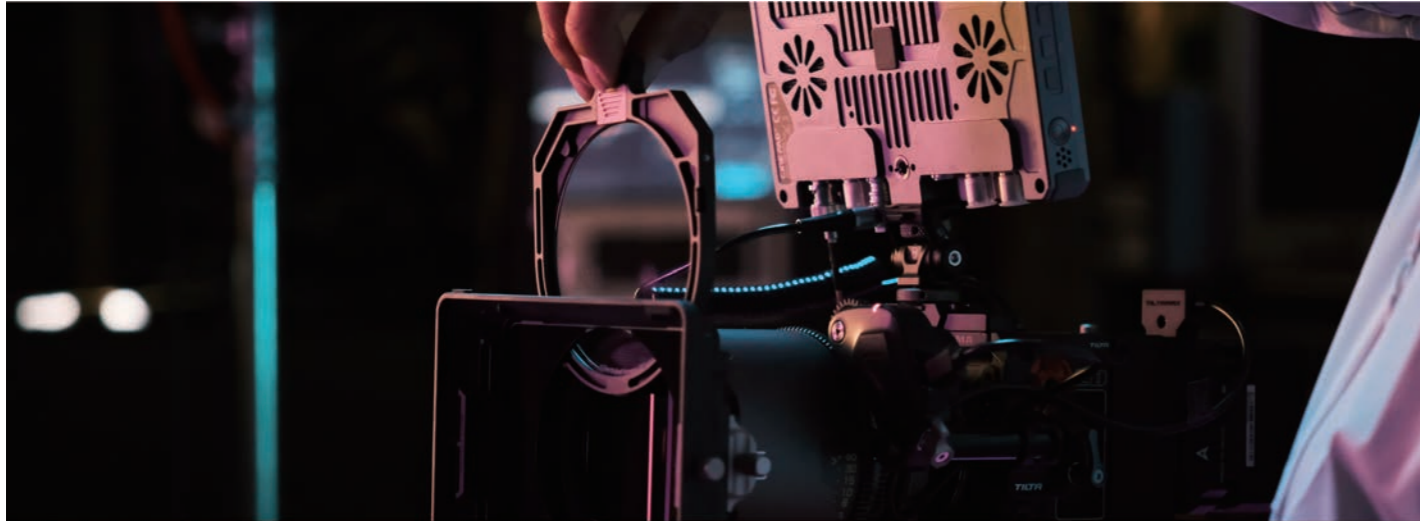


## TILTA'S LATEST CREATIVE FILTERS

**D** Tilta is debuting six new filters, including Black Mist, White Mist, Pearlaura Mist, Glimmer, Digital Diffusion Digital Dynamic Diffusion. The FSND(Full Spectrum Neutral Density) filter is a kind of neutral density filter that consistently reduces the intensity of light, without significantly affecting the color.

## RESTORE IMAGINATION WITH DIFFUSED LIGHT CONTROL

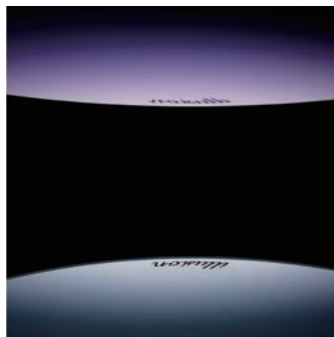
TILTA's Latest Creative Filters Illusion Filter Series



As TILTA's latest manufactured in-house product, the Illusion series was inspired by classic Eastern and Western paintings and Hollywood blockbusters. Tilta is debuting six new filters, including Black Mist, White Mist, Pearlaura Mist, Glimmer, Digital Diffusion, Digital Dynamic Diffusion offering a wide array of choices. These come with the following four key features.



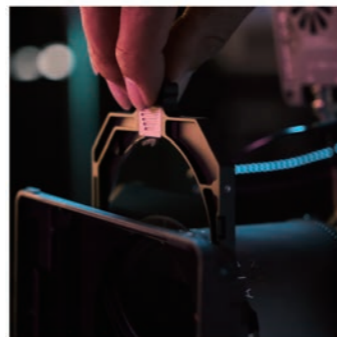
Compatible with the 'Mirage' Ecosystem



Double-sided Nano Coating



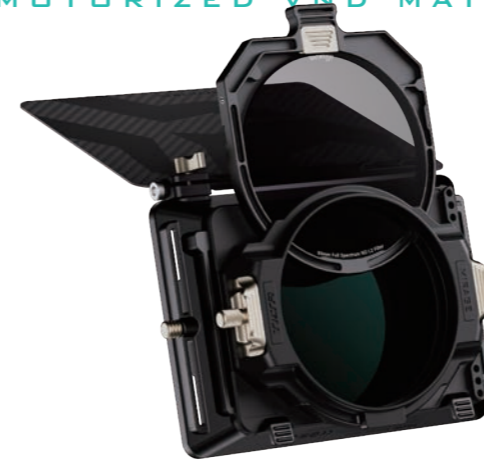
Premium Water White Glass



Lightweight & Portable

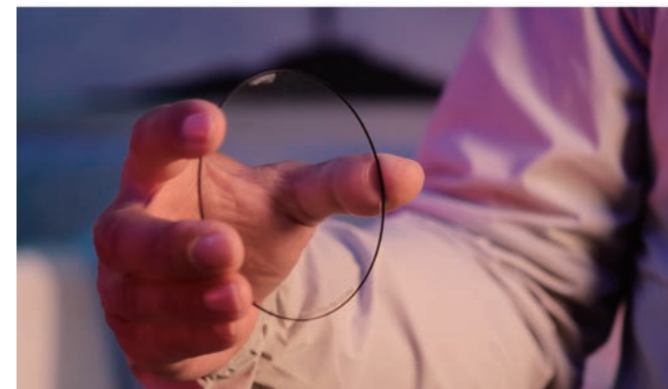
## COMPATIBLE WITH THE TILTA 'MIRAGE' 95MM MATTE BOX

MIRAGE  
MOTORIZED VND MATTE BOX



## PREMIUM WATER WHITE GLASS

Made with premium Water White Glass, these filters undergo multiple processes to prevent reflections and provide accurate color rendition.



## LIGHTWEIGHT & PORTABLE

The 95MM standard filters are designed to balance image quality and portability in terms of thickness and weight.

The package also includes standard accessories such as a filter storage bag and a cleaning cloth, allowing users to focus on their creative work without limitations.



## DOUBLE-SIDED NANO COATING

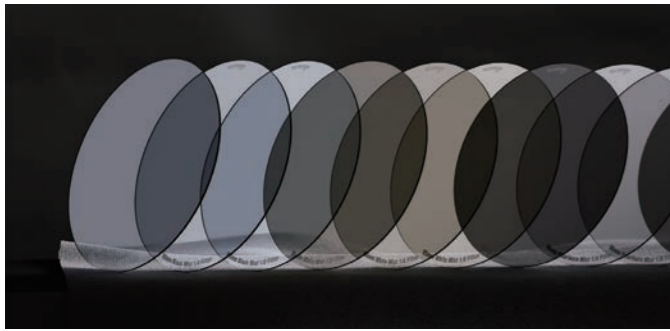
Benefiting from \*5nm high-precision vacuum coating technology, the filter's surface remains clean, scratch-resistant, and less likely to stain, effectively protecting the filters and reducing light reflections.

\*Optical communication level processing precision



## THREE UNIQUE DESIGN PHILOSOPHIES

The 'Illusion' Filter: The Unseen B-side of Imagery



## 5NM VACUUM COATING PROCESS

Coating is a critical step in lens manufacturing. Optical coatings modify the lens's reflectivity, transmission, and anti-reflective properties, thereby enhancing its optical performance. Space uses 5nm coating technology, uniquely blending the layers for each coating. Each layer undergoes meticulous vacuum processing with three essential coatings, including AR anti-reflective, color separation, and polarizing films, ensuring each filter leaves the factory with superior optical quality.



## UNIQUE HIGHLIGHT ROLL-OFF CHARACTERISTICS

Our 'illusion' filters simulate the scattering effect of light on the lens by adding micro concave-convex and speckled textures to the lens surface. This treatment causes light to diffuse and disperse, producing a soft, radiating effect, thereby enhancing the artistic and romantic atmosphere of the overall image.



## COLOR RETENTION

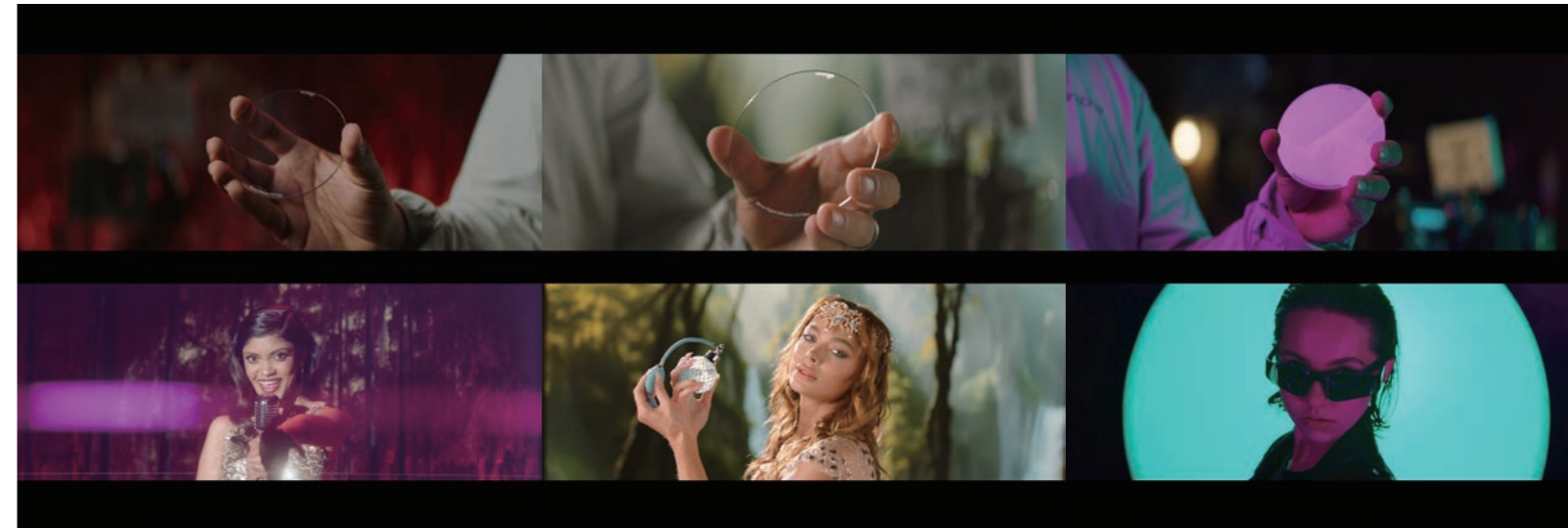
Subtly adjusts color styles, blending insights from both imagery and art. This involves adding soft hues to enhance the emotional expression in photos or films.



**Black Mist Filter**  
Vintage Film

**White Mist Filter**  
Classic American Drama

**Pearlaura Mist Filter**  
Western Film



**Glimmer Filter**  
Broadway

**Digital Diffusion Filter**  
Classical oil painting

**Digital Dynamic Diffusion Filter**  
Cyberpunk



**CAPTURING REALITY**

TILTA's Latest Creative Filters FSND Filter/UV Filter Series



FSND(Full Spectrum Neutral Density) filter is a kind of neutral density filter that consistently reduces the intensity of light, without significantly affecting the color.



Compatible with the 'Mirage' Ecosystem



Double-sided Nano Coating



Exposure Control



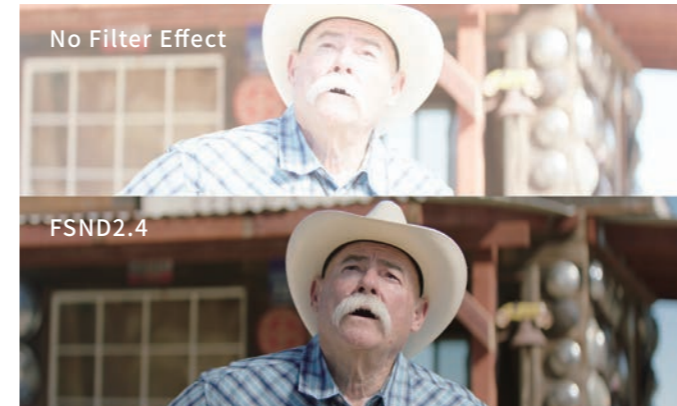
Accurate Color Rendition



Balances Light

**EXPOSURE CONTROL**

The FSND filter reduces light, which is extremely beneficial for shooting in bright conditions, especially when a larger aperture or slower shutter speed is required. By using FSND filters, photographers gain enhanced control over exposure to achieve the desired effects, such as blurring motion, capturing flowing water, or creating long exposure effects.



**ACCURATE COLOR RENDITION**

While producing accurate colors, using FSND filters ensures light reduction. Testing indicates that FSND filters uniformly reduce the levels in the light spectrum, meaning the overall spectral curve remains consistent. This means that light intensity for various colors is proportionally diminished, and does not result in color bias.



Overexposed when FSND is not used

normal exposure

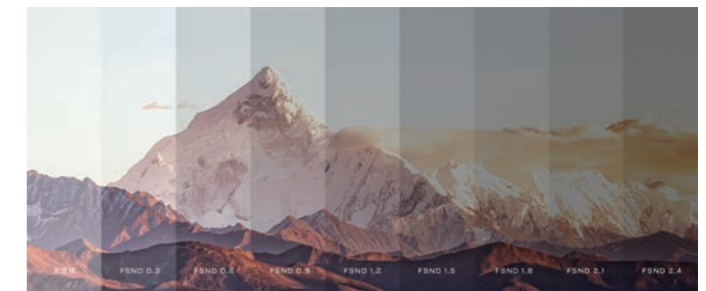
Overexposed when Using FSND 0.6

**BALANCE LIGHT**

In certain scenarios, such as shooting High Dynamic Range (HDR) or capturing scenes with a bright sky and darker landscapes, light levels can vary significantly. Utilizing FSND filters aids in balancing these brightness levels, ensuring a more uniformly exposed shot and preventing issues of overexposure or underexposure.



**COMPARING THE EFFECTS OF FSND FILTERS**



## UV FILTER

The UV filter (Protective filter) of Illusion filter series, is crafted from aluminum silicate electronic glass with a wavelength range up to L41 (410nm). This excels in minimizing color distortion and maintaining the slimmest profile compared to other filters on the market with L37 (370nm), L39 (390nm), and L43 (430nm) options. This filter serves as a lens protector and minimizes the impact of ultraviolet light on the image, resulting in a clear and pure overall picture.



## SCRATCH-RESISTANT

Protecting the lens from surface scratches caused by foreign objects.



## WATERPROOF AND OIL-RESISTANT

It not only protects the lens from damage caused by rain and moisture, but also repels oil stains.



## AVAILABLE KITS



Tilta Illusion 95mm Black Mist, White Mist, Pearlaura Mist, Digital Diffusion, Digital Dynamic Diffusion, Glimmer



Tilta Illusion 95mm L41 UV Filter



Tilta Illusion 95mm Full Spectrum ND Filter  
0.3\0.6\0.9\1.2\1.5\1.8\2.1\2.4



Tilta Illusion 4x5.65" Full Spectrum ND Filter  
0.3\0.6\0.9\1.2\1.5\1.8\2.1\2.4



**VND MODULE PAIRED WITH NUCLEUS NANO MOTOR**

When you choose Kit B, you are able to use the included Nucleus Nano Motor Adapter to secure a Nucleus Nano motor directly to the VND module in order to adjust the density wirelessly. (optional accessory for other kits)



**NUCLEUS-N II**  
WIRELESS LENS CONTROL SYSTEM



**COMPATIBLE WITH ALL TILTA LENS CONTROL HANDLES**

To control the VND module, you have the option to use of all available Tilta lens control handles, including the wireless controller for Tilta Mirage, Nucleus M hand unit, Nucleus Nano hand wheel, advanced focus side handle, wireless lens control handle for Tilta Float, etc.

SHOOTING CONFIGURATION OPTION A  
TILTA LIGHTWEIGHT SHOULDER RIG + MOTORIZED VND MATTE BOX

# LIGHTWEIGHT SHOULDER RIG

Highly durable, compact and lightweight.



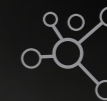
FREE  
HIGH  
COMPATIBILITY



ADJUSTABLE  
CENTER OF GRAVITY



LIGHTWEIGHT



QUICK  
ASSEMBLY



MODULAR  
DESIGN

SHOOTING CONFIGURATION OPTION B  
TILTA ADVANCED SIDE WOODEN HANDLE + MOTORIZED VND MATTE BOX

# ADVANCED WOODEN HANDLE

The Ultimate Operating Experience



HIGH QUALITY  
MATERIAL



ERGONOMIC DESIGN



EASY INSTALLATION



MAGNETIC MODULE



EXPERT CRAFTSMANSHIP



QUICK RELEASE



PRODUCT SPECIFICATIONS

# POCKET FOLLOW FOCUS

MINI FOLLOW FOCUS 2.0





# MINI TABLE TOP TRIPOD

# MINI ARTICULATING ARM



# ROTATABLE CIRCULAR FILTER TRAY FOR TILTA MIRAGE



# FILTER PROTECTION COVER FOR TILTA MIRAGE

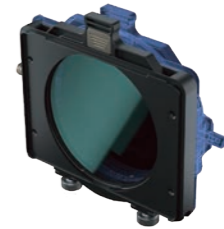


**SUPPORT ACCESSORIES FOR  
MIRAGE MATTE BOX**



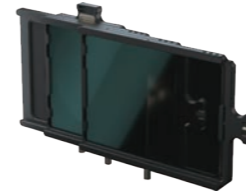
**LIGHTWEIGHT FILTER CLAMP-ON ADAPTER**

Mounts directly onto the lens without a matte box body. Supports lightweight camera setups.



**95MM STACKABLE CIRCULAR  
FILTER TRAY FOR TILTA MIRAGE**

Holds an additional circular filter.



**4x5.65 STACKABLE FILTER TRAY  
FOR TILTA MIRAGE**

Holds additional 4x5.65 filters.



**RUBBER HOOD FOR TILTA MIRAGE**

Flexible material for additional safety



**FILTER PROTECTOR FOR TILTA MIRAGE**

Protects for lenses and filters from dust and debris during high speed conditions.



80mm Cinema Adapter  
Ring for Tilta Mirage



95mm Polarizer Filter  
for Tilta Mirage



Dual Circular Filter Tray  
for Tilta Mirage



## PRODUCT SPECIFICATIONS

Two different packaging designs.



Product Dimensions: 16.5×13.5×4.8cm

Packaging Dimensions: 28×23×11cm

Matte Box Weight: 140g

Total Weight: 956g

Materials: Magnesium, Nylon, Fiber

SKU: MB-T16

### AVAILABLE KITS

K1 A MB-T16



Tilta Mirage Matte Box



Circular Filter Tray for Tilta Mirage



82/77/72/67mm Adapter Ring



Basic Soft Carrying Case for Tilta Mirage



Product Dimensions: 16.5×13.6×6.1cm

Packaging Dimensions: 32×26.5×19cm

Matte Box Weight: 140g

Total Weight: 1448g

Materials: Magnesium, Nylon, Fiber

SKU: MB-T16-A/B

K2 B MB-T16-A



Tilta Mirage Matte Box



Circular Filter Tray for Tilta Mirage



82/77/72/67mm Adapter Ring



Nucleus Nano Motor Adapter for Tilta Mirage



95mm Variable ND for Tilta Mirage



Filter Pouch



15mm LWS Support for Tilta Mirage



Advanced Soft Carrying Case for Tilta Mirage

K3 C MB-T16-B



Tilta Mirage Matte Box



Circular Filter Tray for Tilta Mirage



82/77/72/67mm Adapter Ring



Nucleus Nano Motor Adapter for Tilta Mirage



Wireless Motor for Tilta Mirage



14500 Power Supply for Tilta Mirage Motor



95mm Variable ND for Tilta Mirage



Filter Pouch



14500 Battery Charger Set



15mm LWS Support for Tilta Mirage



Advanced Soft Carrying Case for Tilta Mirage

## OTHER ACCESSORIES



Filter Protector  
Kit for Tilta Mirage



4x5.65 Stackable Filter  
Tray for Tilta Mirage



Advanced Control  
Knob for Tilta Mirage



Lightweight Filter  
Clamp-On Adapter



Top Flag for  
Tilta Mirage



Rubber Hood  
for Tilta Mirage



Wireless Controller  
for Tilta Mirage



55mm Adapter  
Ring for Tilta Mirage



58mm Adapter  
Ring for Tilta Mirage



52mm Adapter  
Ring for Tilta Mirage



77mm Adapter  
Ring for Tilta Mirage



85mm Adapter  
Ring for Tilta Mirage

[WWW.TILTA.COM](http://WWW.TILTA.COM)

 [SALES@TILTA.COM](mailto:SALES@TILTA.COM)

 [@TILTAGLOBAL](https://twitter.com/TILTAGLOBAL)

 [@TILTAMAX](https://www.instagram.com/TILTAMAX)

 [@TILTAMAX](https://www.tiktok.com/@TILTAMAX)

 [@TILTA](https://www.youtube.com/@TILTA)

 [@TILTA](https://www.facebook.com/@TILTA)